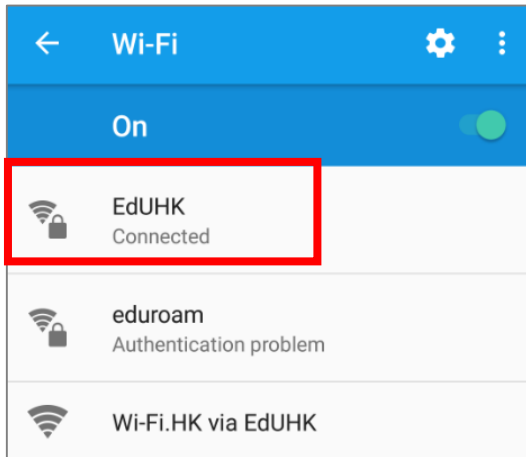


# Wi-Fi Printing

For Android (4.4 or above)

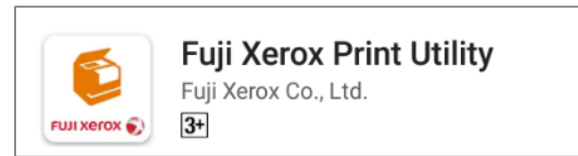
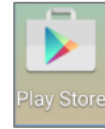
富士施樂『八達通』自助影印服務使用指示  
FUJI XEROX Octopus Self Copy Service Operation

## 1. Connect Mobile to Wi-Fi



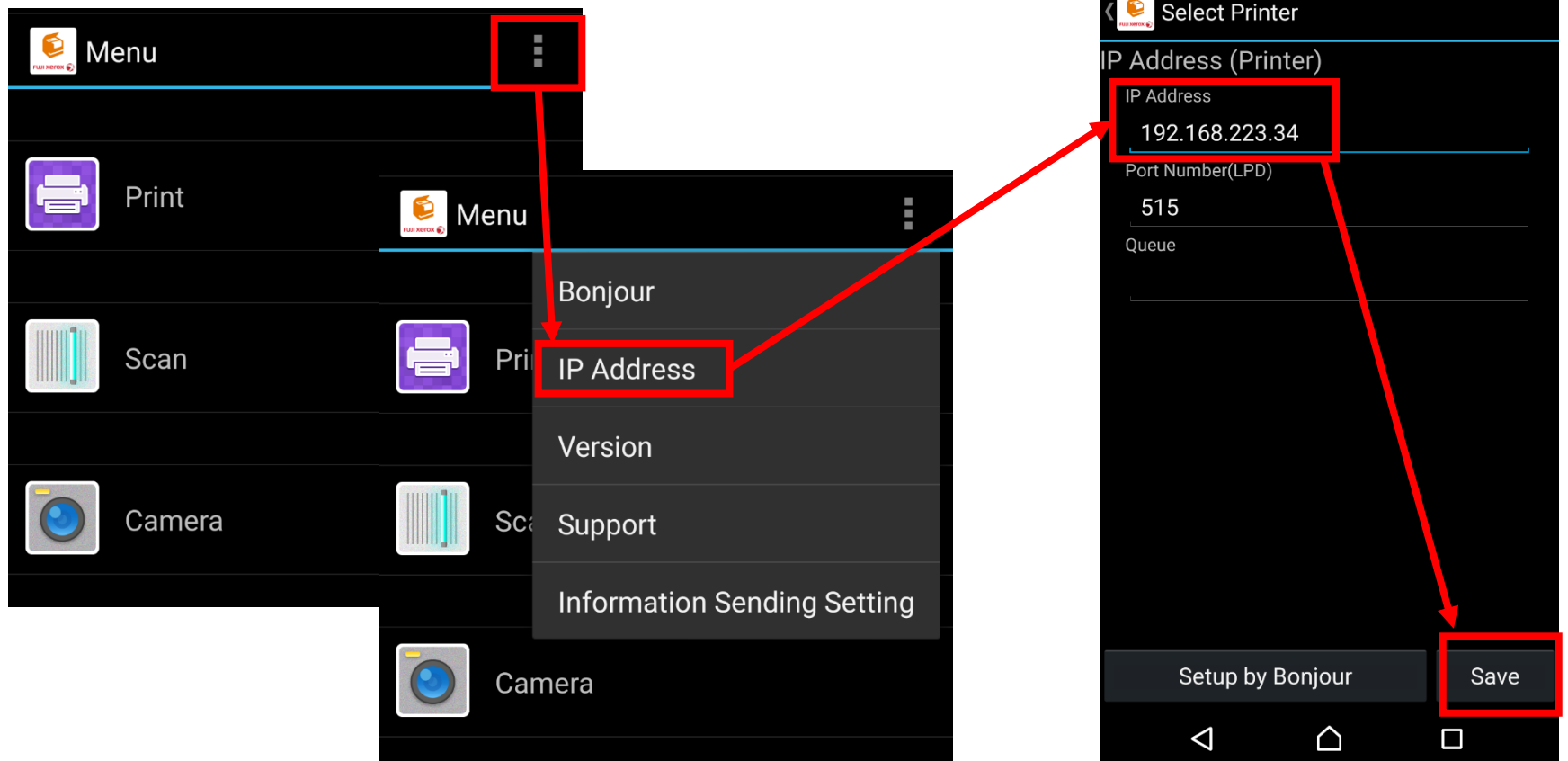
Must select [EdUHK]

## 2. Installation



Install [Fuji Xerox Print Utility] from Play Store

## 3. Add Printer



Please refer to the table below for all the IP addresses:

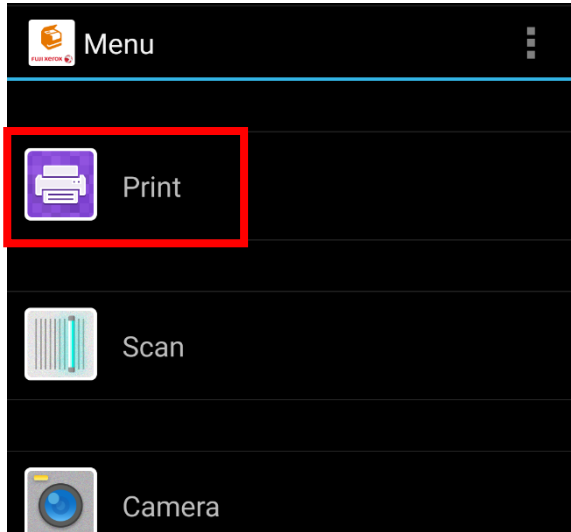
Machine No.	Floor	IP Address
A5	G/F	192.168.223.32
B4	1/F	192.168.223.33
C3	2/F	192.168.223.34
D3	3/F	192.168.223.51
D5	4/F	192.168.223.52

# Wi-Fi Printing

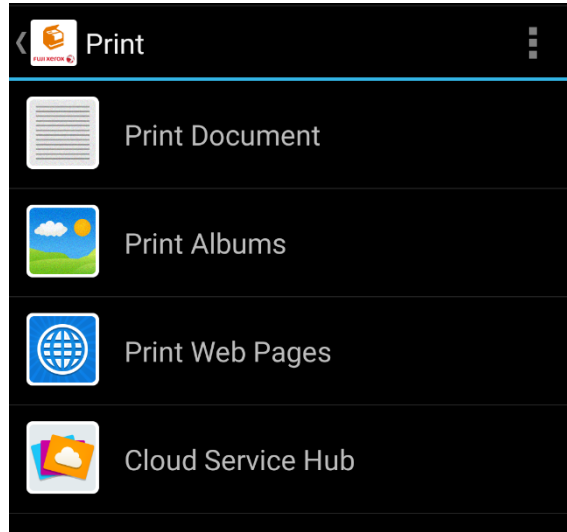
For Android (4.4 or above)

富士施樂『八達通』自助影印服務使用指示  
FUJI XEROX Octopus Self Copy Service Operation

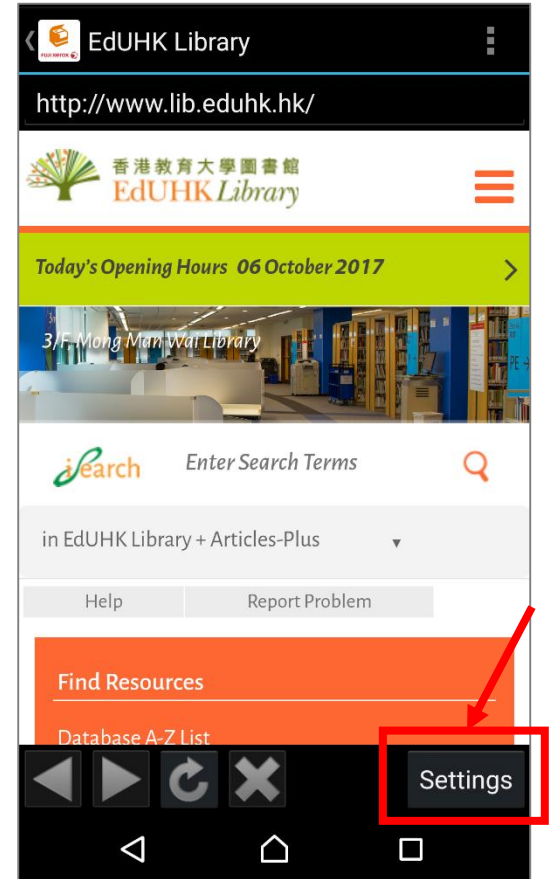
## 4. Printing



a. Tap [Print] in FUJI XEROX application

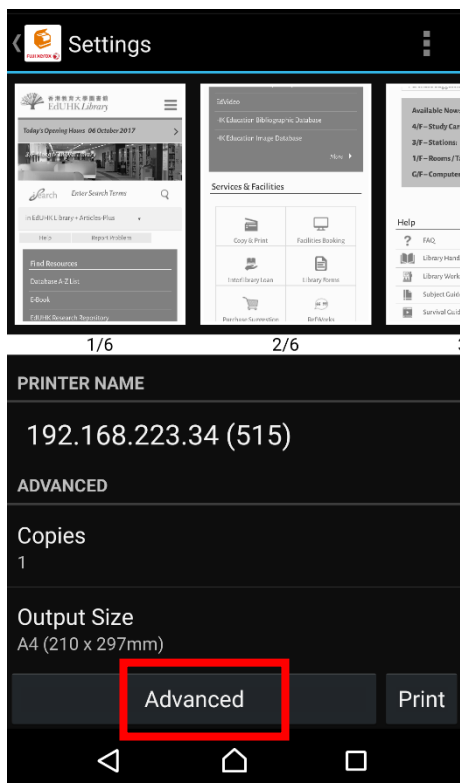


b. Tap desired file to print

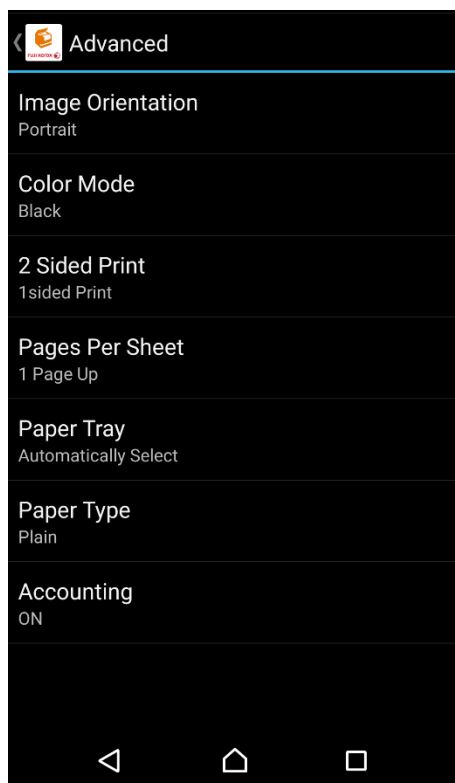


c. Change desired [Settings]

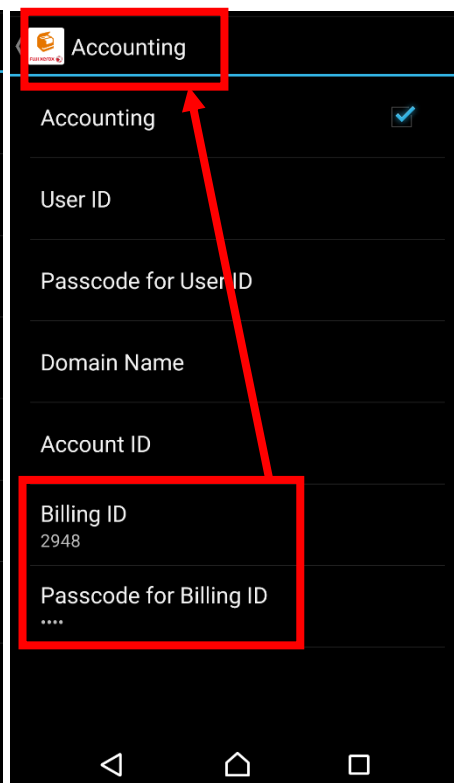
Other than using FUJI XEROX application, you can “Share” with FUJI XEROX for printing



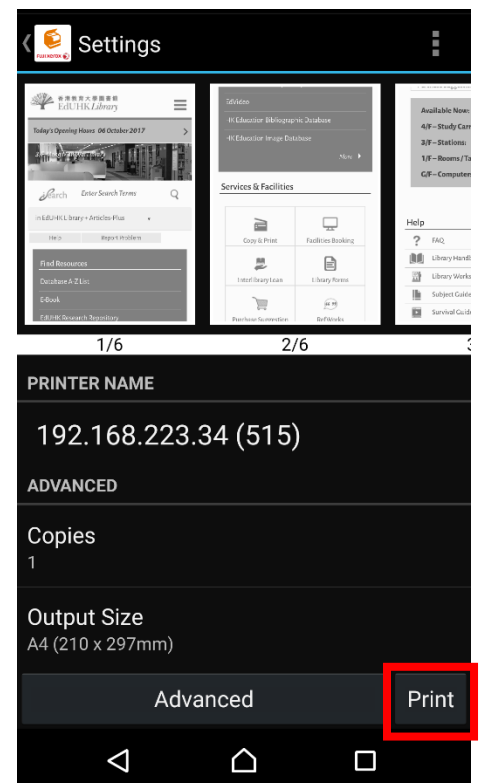
d. Tap [Advanced] (only for Website printing)



e. Tap [Accounting]



f. Set the Billing ID and Passcode and Tap [Accounting] to save



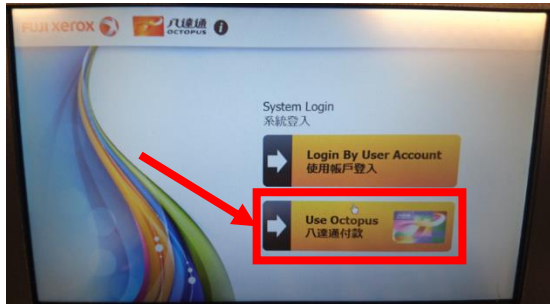
g. Tap [Print] to start the print

# Wi-Fi Printing

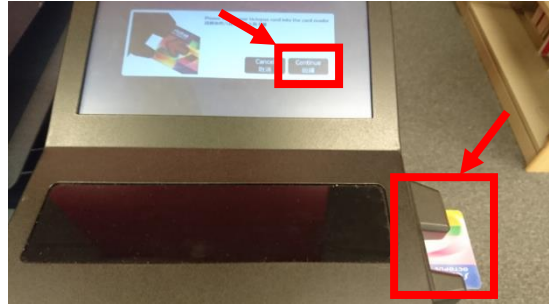
For Android (4.4 or above)

富士施樂『八達通』自助影印服務使用指示  
FUJI XEROX Octopus Self Copy Service Operation

## 5. Insert Octopus Card



I. Select [Use Octopus] on Octopus Processor

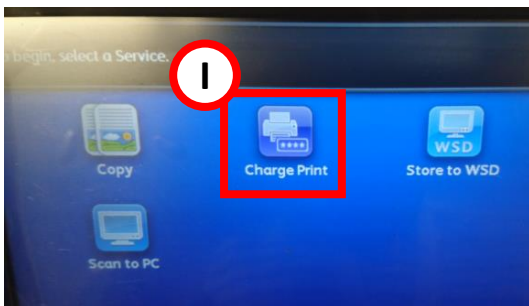


II. Insert Octopus card and click [Confirm] on Octopus Processor

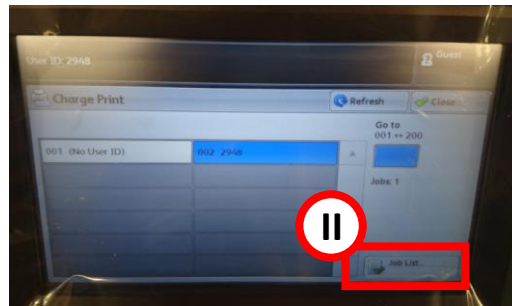


III. Octopus Processor will show the usable value

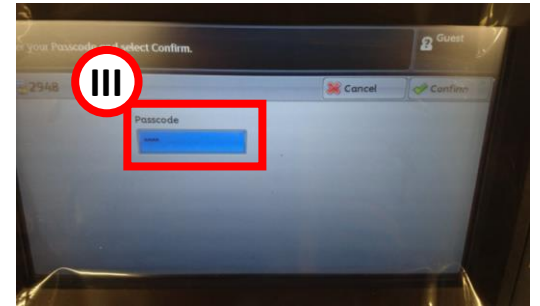
## 6. On Printer



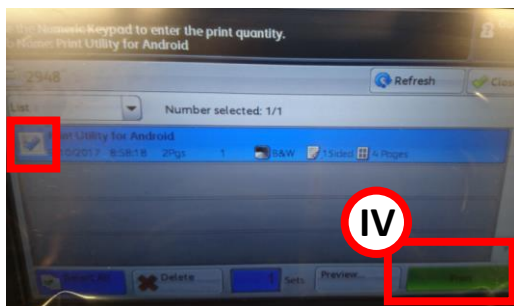
I. Tap [Charge Print] on the Menu of the Printer



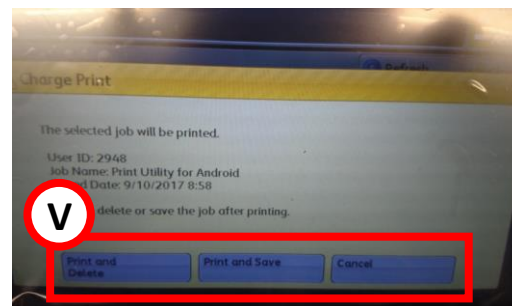
II. Select the Billing ID entered before and tap [Job List]



III. Input [Passcode]

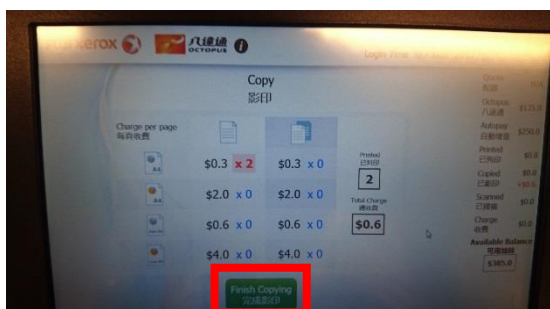


IV. Select your print job and tap [Print]

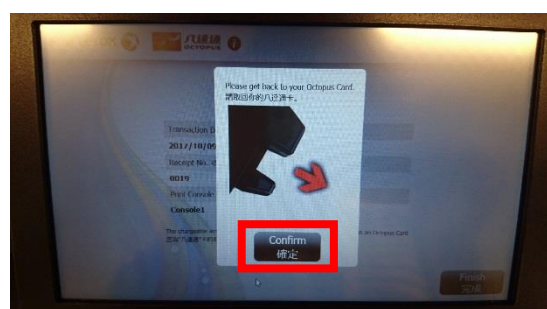


V. Tap the action after printing to start printing

## 7. Remove Octopus card



I. Select [Finish Copying] on Octopus Processor



II. Select [Confirm] on Octopus Processor



III. Remove Octopus card