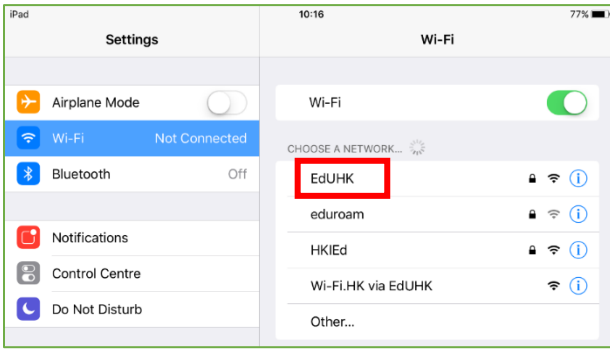
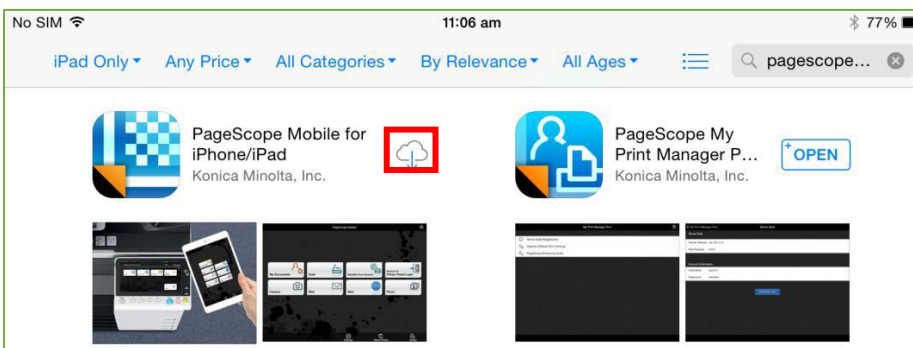


1. Connect to Wifi

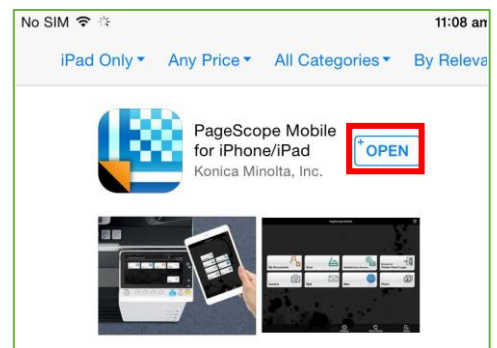


Must select [EdUHK]

2. Installation

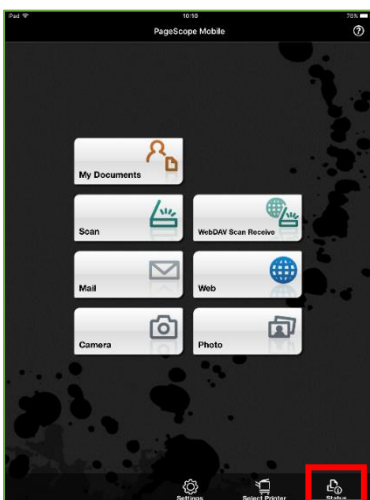


Tap [App Store] and Search [PageScope Mobile] and Tap [] to download and install

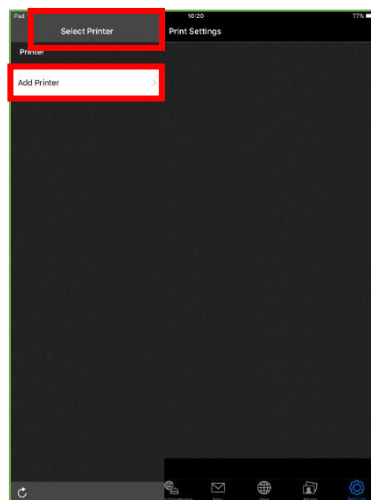


Tap [Open]

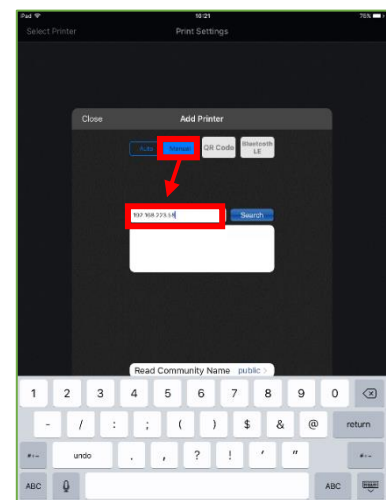
3. Add Printer



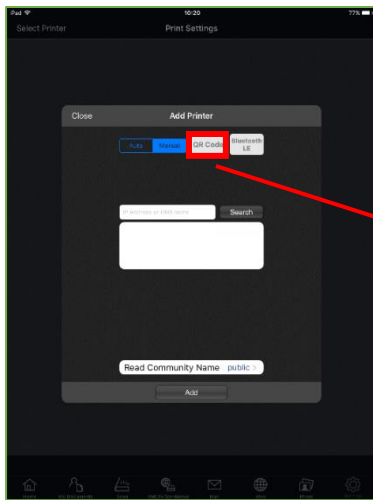
Tap [Select Printer]



Tap [Select Printer], and [Add Printer]



Tap [Manual] to direct input device's IP address:
192.168.223.59



Or Tap [QR Code] to Scan



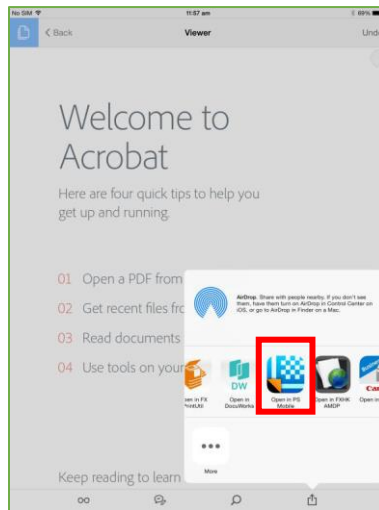
Tap desired device and tap [Add]

4. Printing

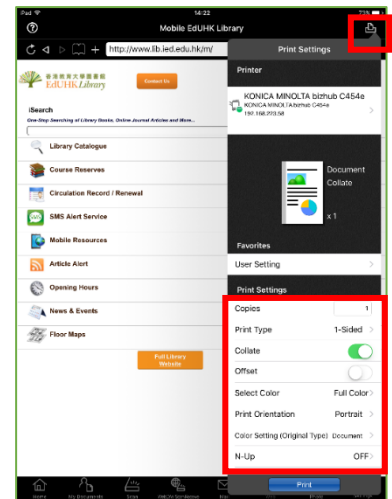


In PageScope Mobile application, you can tap [My Document] or [Photo], and tap desired file to print

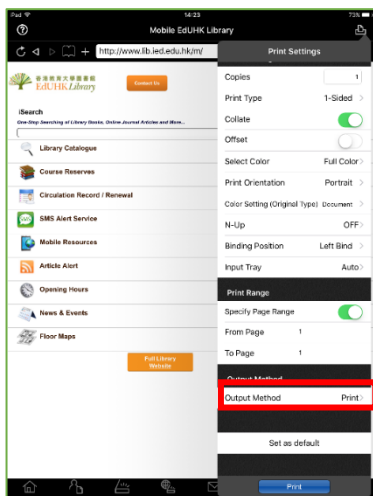
Or



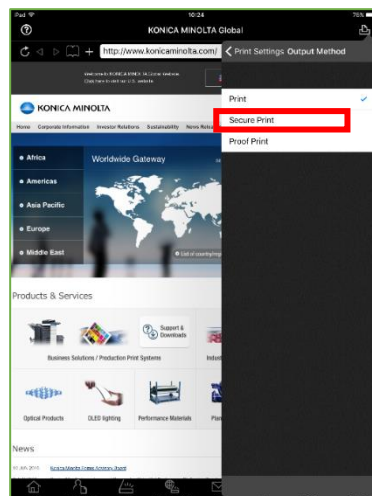
In 3rd application, you can tap [Open in] and select [Open in PS Mobile]



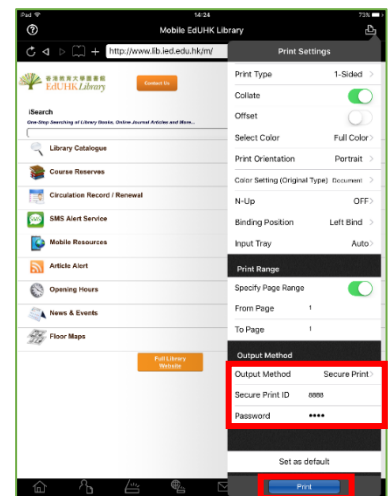
Tap Printer Settings [🖨️] to change desired print setting



Tap [Output Method]



Tap [Secure Print]



Input [Secure Print ID] and [Password], tap [Print] to print

