

HOW TO ...

Connect Wireless Network at MMW Library & Tseung Kwan O Study Centre Learning Commons

- Wireless network service is available in both MMW Library and the Tseung Kwan O Study Centre Learning Commons
- Support Wi-Fi devices such as notebook, PDA and smart phone.
- Must comply with *IEEE 802.11b/g/n standards*



Please note that using wireless connection in a public network is in general not secure. Users are advised not to use the wireless network for sensitive transactions.



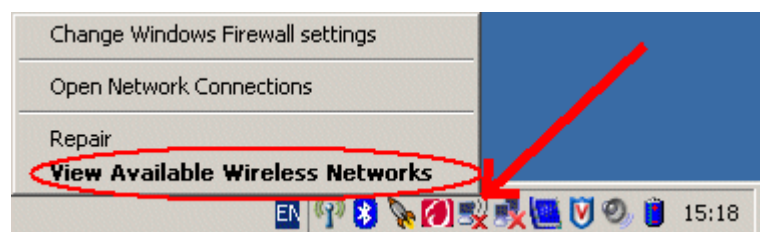
The “*Wireless Network Connection for Guests and Visitors*” procedure is the simplest way to get Internet connection and has been listed below for the reference.

Wireless Network Connection for Guests and Visitors

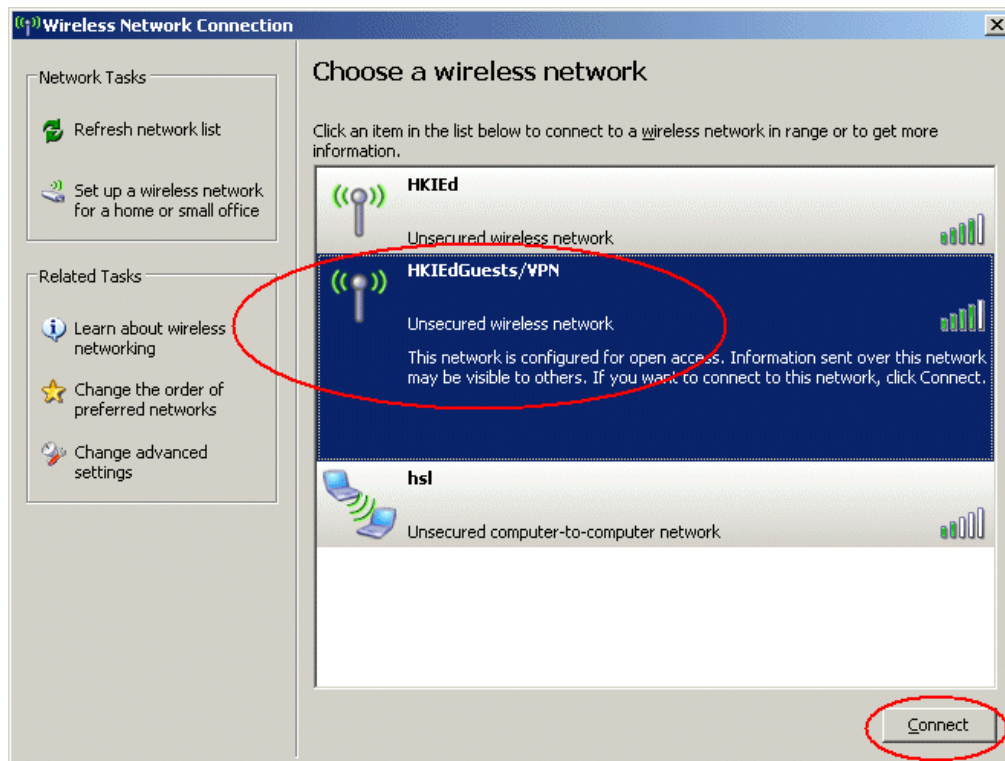
For external members (e.g. alumni and school teachers, etc.) who do not have a valid EdUHK network account and password, they could still use the EdUHK wireless network without encryption. However, please note that using this connection method, data is not encrypted while transferring over the air. Users should not use public wireless network unencrypted for sensitive transactions.

Connection Procedures: (screen capture based on Windows XP wireless connection utility)

1. Right click the wireless connection icon on the task bar and choose "View Available Wireless Networks" to open the wireless connection utility.



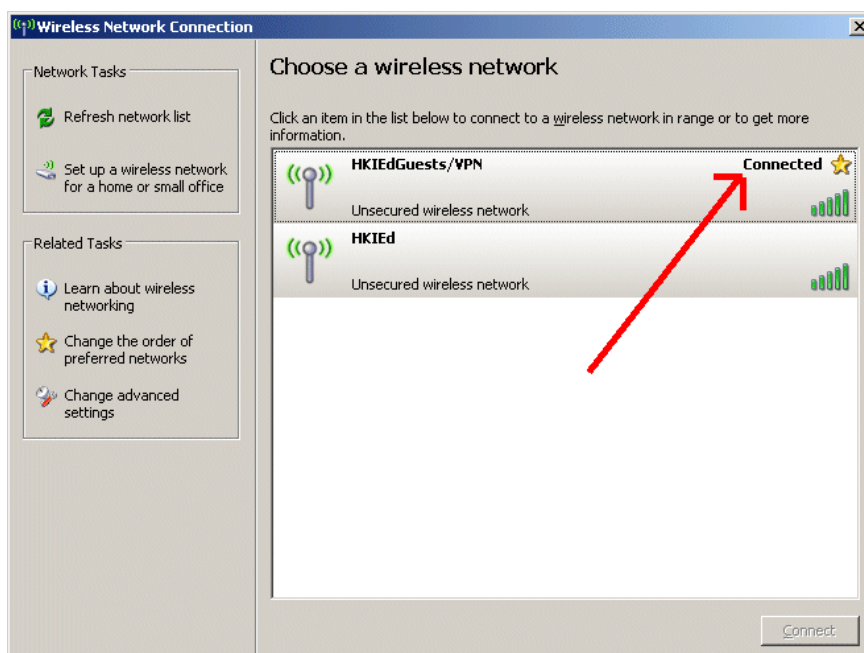
2. From the right hand side of the window, highlight "EdUHK Guests/VPN" and click "Connect".



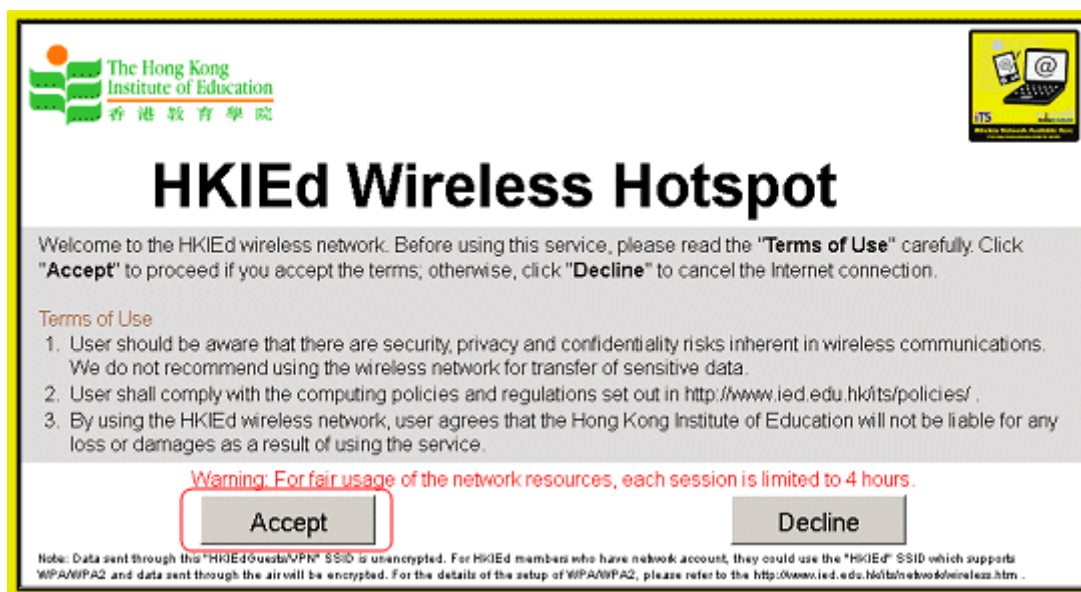
3. Then, there is a pop up window indicating that you are connecting to a unsecured network. Press "Connect Anyway".



4. It will then start to connect to the wireless network. It will show "Connected" when done.



5. Start Internet Explorer. Then a welcome page will be shown. To accept the 'Terms of Use', please click "Accept".



6. Now, enjoy your Internet surf over the HKIED wireless network.

ITS also recommend two secure wireless connection options for HKIED member to connect wireless network:

Secure Wireless Connection Options -

1. [Wireless Network Connection for Staff and Students through WPA/WPA2](#)
2. [Wireless Network Connection for Staff and Students through VPN](#)

Please contact ITS Help Desk (Tel: 2948-6601 for Tai Po Campus or 2190-8581 for Tseung Kwan O Study Centre) or accessing ITS homepage (<http://www.ied.edu.hk/its/network/wireless.htm>) to set portable devices.