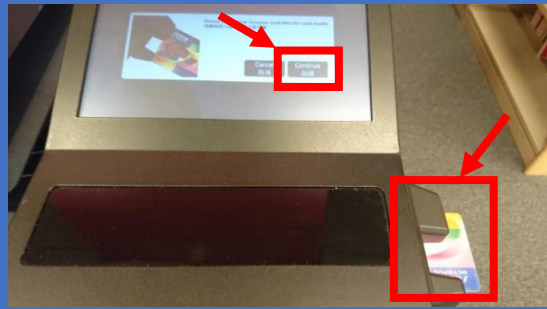
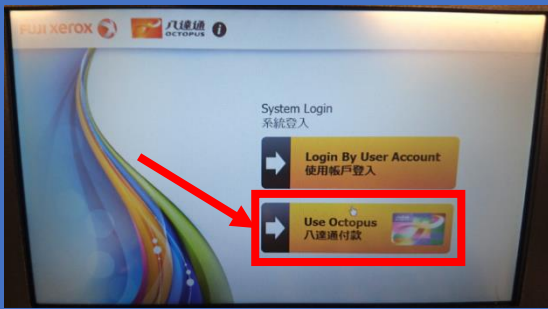


Copy

富士施樂『八達通』自助影印服務使用指示 FUJI XEROX Octopus Self Copy Service Operation

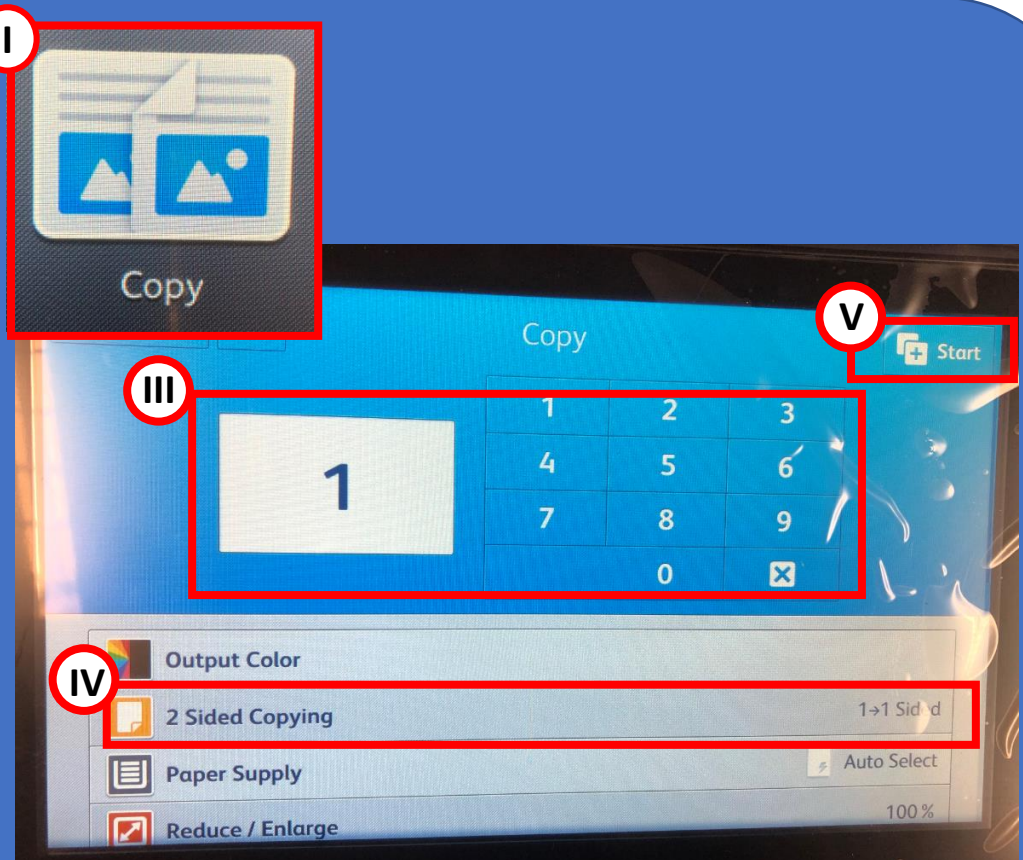
1 請先插入八達通卡 Insert Octopus Card for Copying



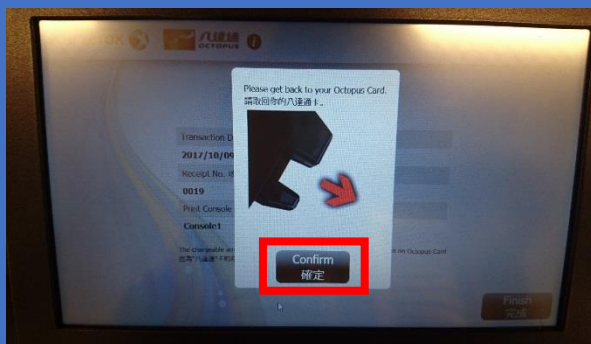
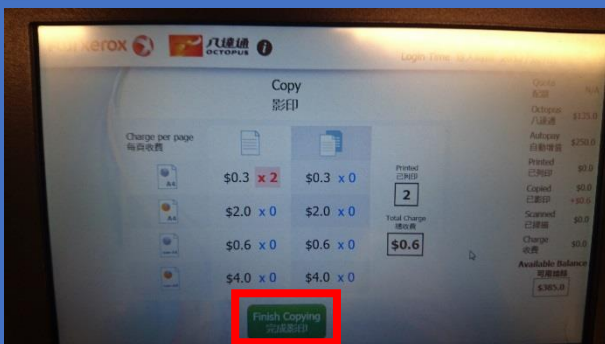
- I. 在八達通收費器中選取【八達通付款】
Select [Use Octopus] on Octopus Processor
- II. 於機身右邊插入八達通卡並在收費器上按【繼續】
Insert Octopus card and click [Confirm] on Octopus Processor
- III. 當收費器顯示八達通卡的可用結餘後，便可開始影印。
Octopus Processor will show the Available Balance

2 開始影印文件 Making Copy

- I. 在影印機主畫面選取【複印】
Select [Copy] on the Menu of the Copier
- II. 打開影印機蓋 Open cover
或 or
放入原稿 (如用入紙器原稿正面請向上放)
Place Original (put the original face up at the feeder)
- III. 用數字鍵輸入影印數量 Input no. of copy
- IV. 選擇單面或雙面 Select 1 or 2 Sided Copying
- V. 按開始鍵進行影印 Press Start to copy



3 影印完畢後，請取回八達通卡 Remove Octopus card after copying



- I. 在八達通收費器中選取【完成影印】
Select [Finish Copying] on Octopus Processor
- II. 在八達通收費器中選取【確定】
Select [Confirm] on Octopus Processor
- III. 取回八達通卡
Remove Octopus card