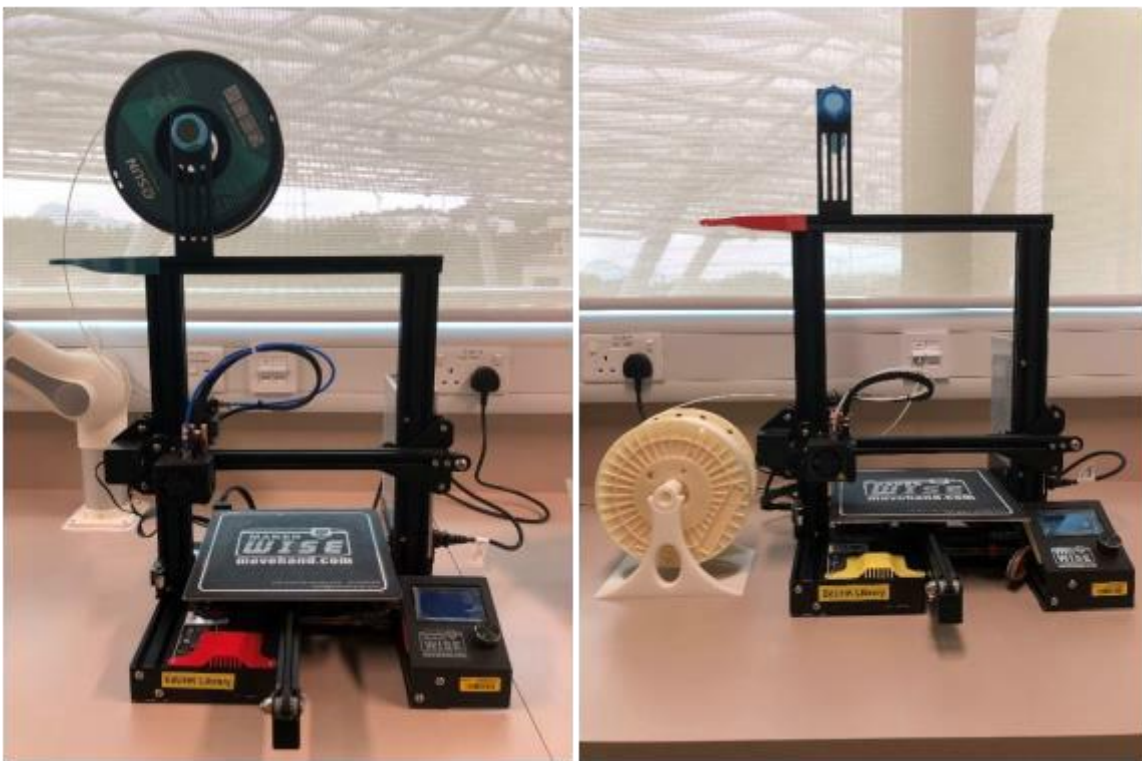


How to Use Self-operated 3D printer at Library STEM Room (for EdUHK Students & Staff)

WiseMaker CP220 User Guide



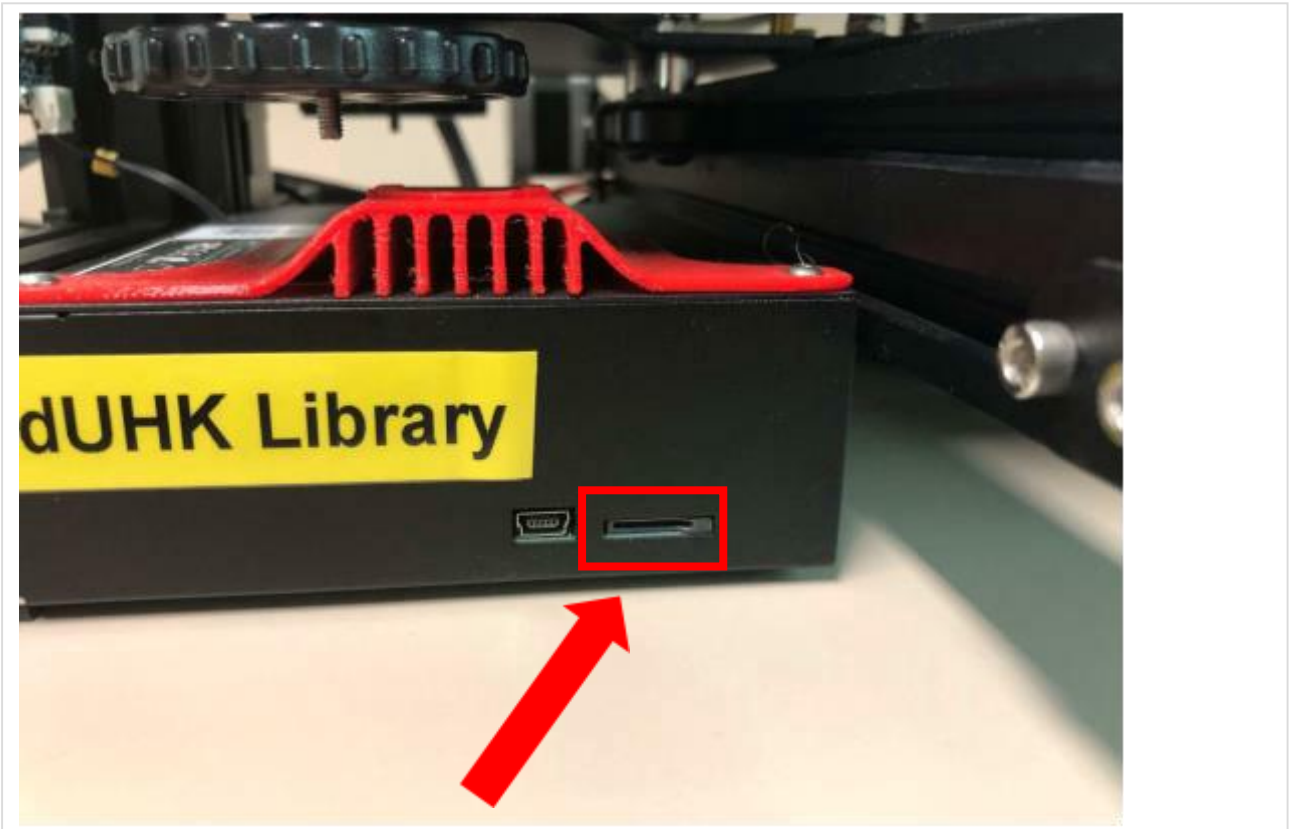
1. Before Printing
2. Start Printing
3. After printing

Before Printing

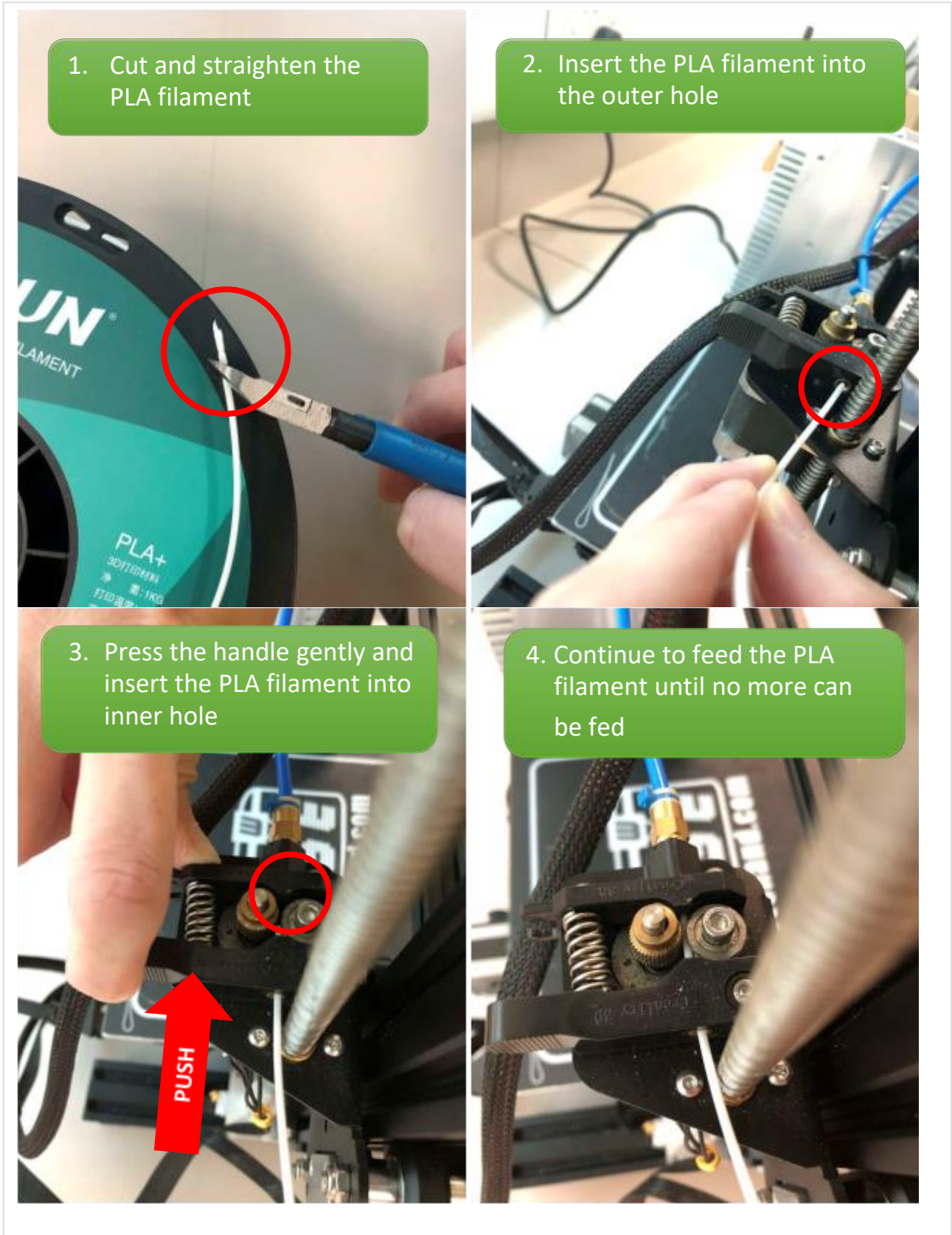
1. Prepare the 3D printing file
2. Submit the file via Library online form (Library staff will contact user to reserve the station in STEM Room)
3. Borrow the printing tool kit. The printing tool kit contains the following items
 - PLA filament
 - microSD card
 - Card reader
 - Diagonal cutter
 - Spatula
4. Check the file (Cura/other Slicing Software) [Powerpoint]
 - File format (STL is preferable)
 - Object Size
 - Printing Quality
 - Support
 - Adhesion
 - Details can be printed or not
5. Check the printing time and materials required
6. Export the file into G-code format and save it on the microSD card

Start Printing

1. Insert the microSD card into the printer's slot at the front



2. Insert the PLA filament [\[Video\]](#)



3. Switch on the printer



4. Select the file for printing



Select the file for printing
Info screen → Print from SD →
select the file



It will return back to the Info screen
and start to warm up the heat bed
and nozzle

*** Don't touch the bed and nozzle
after heating.

5. Wait for the first few layers to print out successfully



After printing

1. Remove the PLA filament [\[Video\]](#)

1. Heat up the nozzle
Info screen → Control → Temperature → Nozzle

2. Set the nozzle temperature to 210 °C

3. Return back to the Info screen
Control → Main → Info screen
Wait until the nozzle temperature reaches 210°C

4. Unload the PLA filament
Push the handle gently. Feed the PLA filament until it comes out from the nozzle, then pull out all PLA filament from the printer

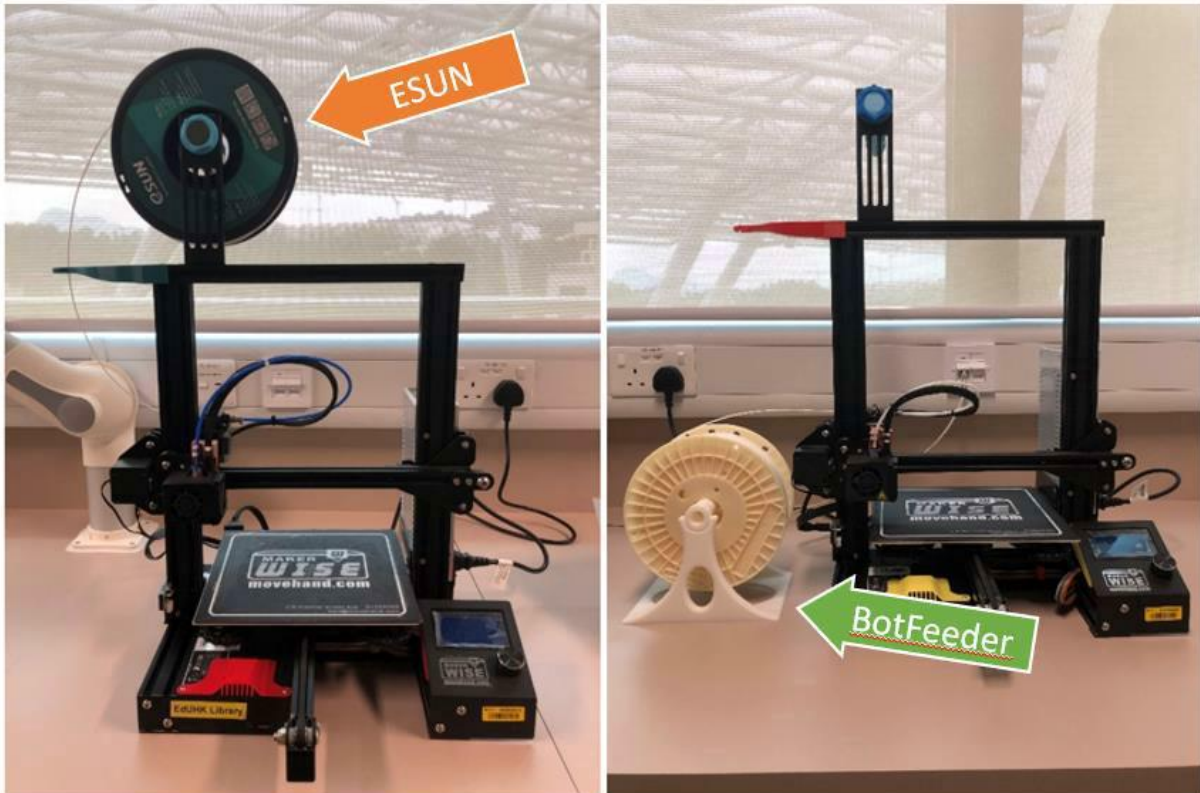
Press the handle gently

Press and pull
先推後拉

2. Set the nozzle temperature to 25°C to cool it down (please refer Step 1.1)
3. Return to the Info screen and switch off the printer
4. Put all items back to the printing tool kit and return it to Library staff / counter

Remarks

1. Library provides two different brands of PLA filament (ESUN and BotFeeder). As the spool diameters of the PLA filament are not the same for different brands, the position for the PLA filament will be different.



2. If you have any difficulties in inserting the PLA filament, you can unscrew the highlighted part, let the filament pass through the holes and then screw it back.

