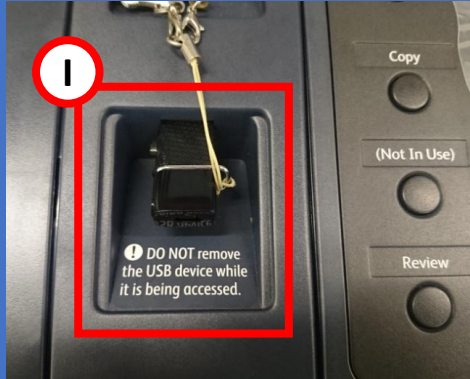


Scan to USB

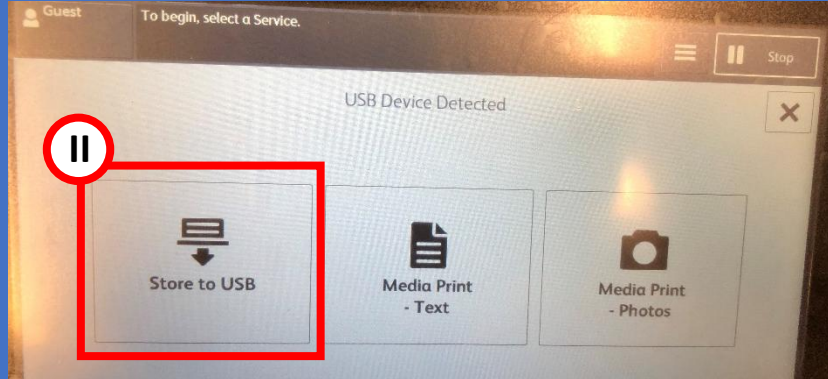
富士施樂『八達通』自助影印服務使用指示
FUJI XEROX Octopus Self Copy Service Operation

1

插入USB Insert USB to Printer



- I. 在影印機左方插入USB
Insert USB to the Left
hand side of the Copier

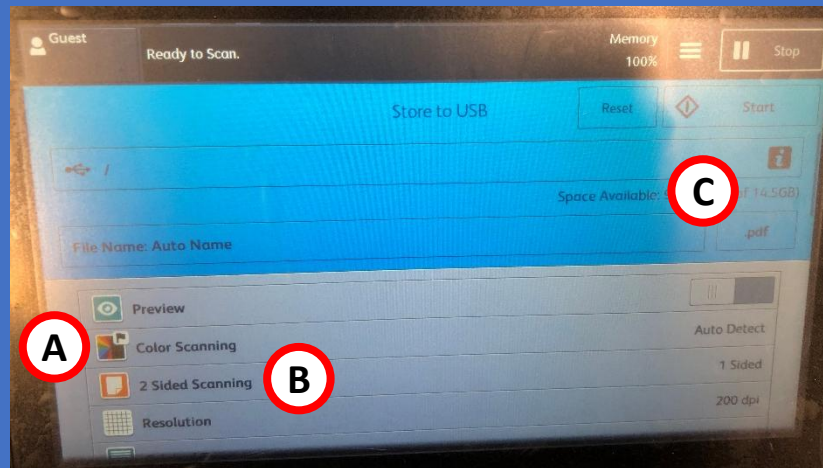


- II. 選取【掃描USB記憶體儲存】
Tap [Scan to USB]

2

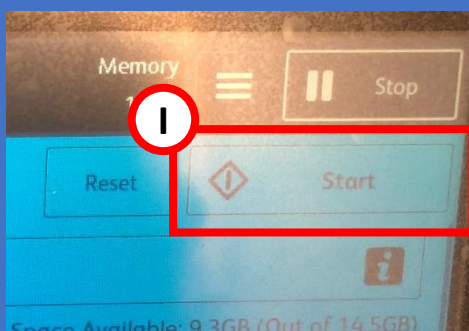
掃描設定 Scan Setting

- A. 設定掃描色彩
Select Scan Color
- B. 設定掃描頁數
Select Scan page
- C. 設定掃描印出檔案格式
Select Scan type

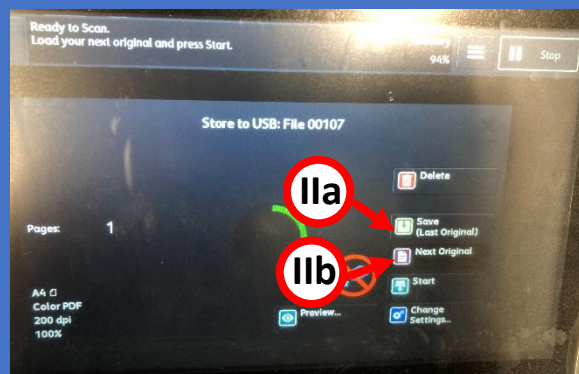


3

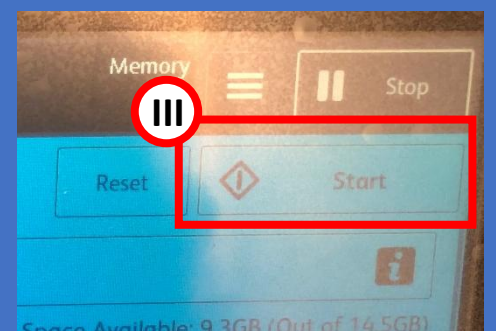
開始掃描並傳送文件 Start Scanning and send to USB



- I. 按開始鍵進行掃描
Press Start to scan



- IIa. 如果已掃描至最後一頁，可按【送信】進行傳送
Press [Save] if the last original have been scan
- IIb. 如果仍需要進行掃描，可按【有下一張原稿】繼續進行掃描
Press [Next Original] to scan next copy



- III. 或可按開始鍵進行傳送
Or press start to send to PC

4

完成 Finish

完成傳送後，按【影印機主畫面頁】鍵，然後移除USB

Press [Service Home] button before ejecting the USB.

